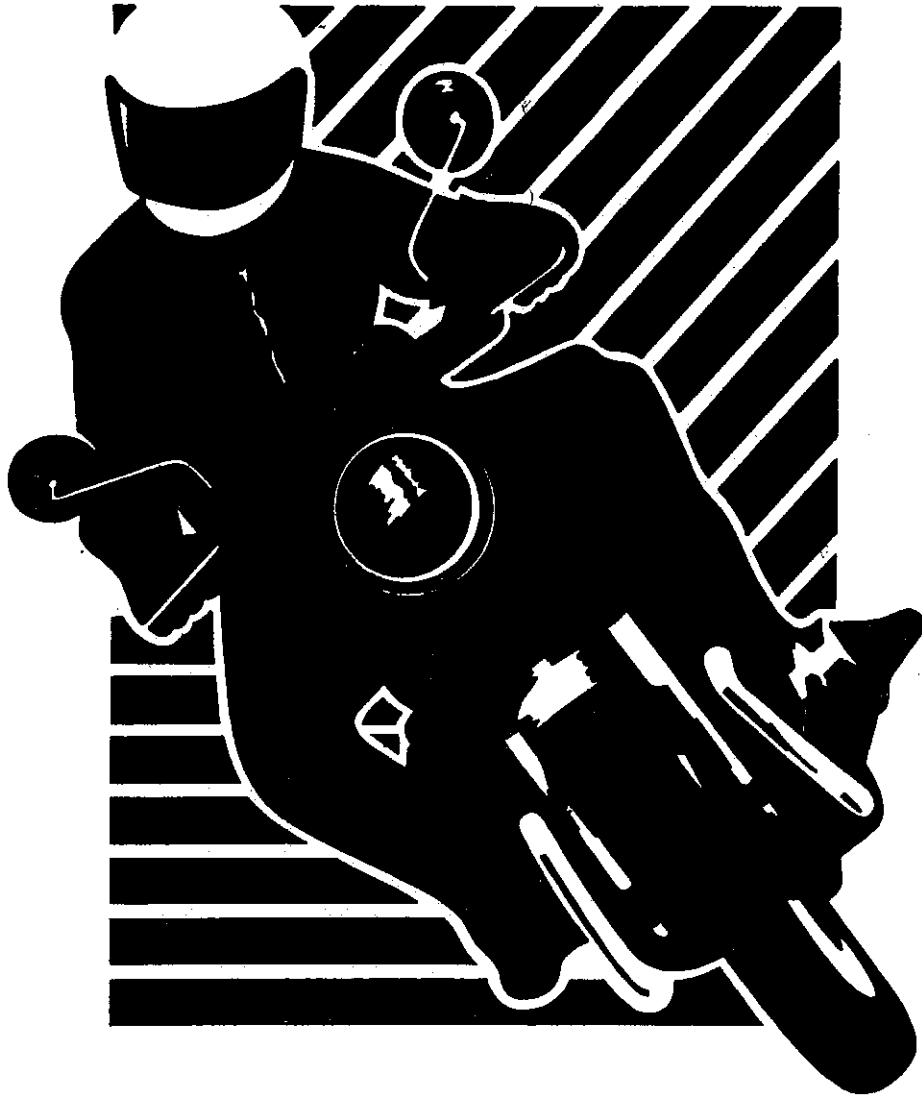


MAY 90

Good Vibrations



MOTORCYCLE TOURING CLUB OF VICTORIA

P.O. Box 453, Richmond 3121, Victoria

Voting Slip

ASSOCIATE MEMBERSHIP

Associate membership will be open to persons who have attended at least three (3) functions organized by the Association and who satisfy the Committee that they would be worthy members. Applications will be sponsored by two (2) financial Full members and one (1) Committee member.

The following conditions shall apply to Associate members:

- (1) Eligible to vote in the affairs of the Association.
- (2) Ineligible for election as Officers of the Association or as Ordinary members of the Committee.
- (3) Shall not be entitled to receive editions of the Association magazine.
- (4) Annual subscriptions to be set at fifty percent (50%) of Full membership rate.
- (5) Shall be a Non-rider of motorcycles on Association outings.

=====

I, being a financial member of the MTCV, Inc, agree to the above amendment.

YES

☐

NO

☐

(Tick where applicable)

=====

PUBLIC OFFICER

The Committee shall appoint a person to the Office of Public Officer. Either a Member or Non-member, Solicitor, Accountant or any other agent deemed by the Committee to be appropriate for the position.

=====

I, being a financial member of the MTCV, Inc, agree to the above amendment.

YES

☐

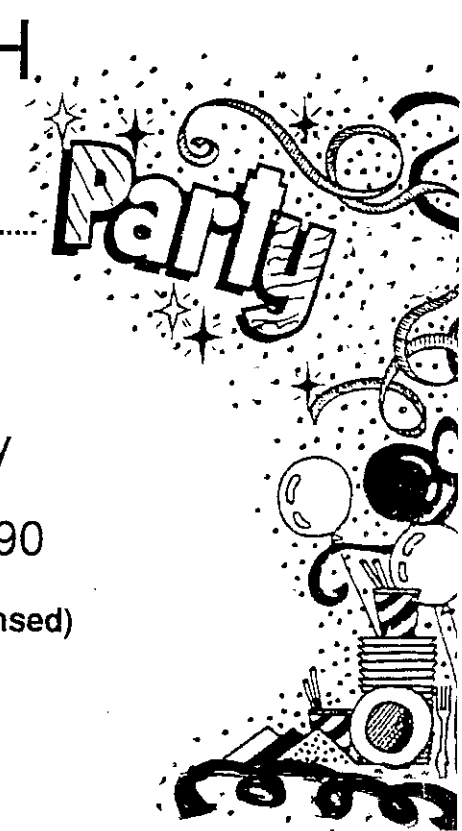
NO

☐

(Tick where applicable)

may 90

PARTY _ PARTY _ PARTY BIRTHDAY BASH.



Please come and help
IAN PAYNE

Celebrate his **40th.** Birthday

Date: Saturday 19th. May 1990

Venue: CHADSTONE BOWLS CLUB (Licensed)

Chadstone Road
Chadstone (Melways 69 - D3)

Time: 6.30 p.m. to 12.00 p.m. (Midnight)

R.S.V.P. 14th. May 1990 (To enable catering to be finalized - Spit Roast)
I. Payne, 2/3 Leroux St. Oakleigh.

Thank you for your invitation,

I / We.....will be attending

Phone.....

LAST LAUGH THEATRE RESTAURANT

DATE: Friday 20th of July.

TIME: 7.30pm Sharp.

ADDRESS: 64 Smith st. Collingwood.

PRICE: \$37.00 per person.

Includes, a four course meal (6 choices plus vegetarian).

Two hour World class comedy show.

Licensed bar facilities.

After show dancing.

Name.....Phone.....

Please book for me.....place(s) at this Club function at \$37/person.

Total Cost \$.....

I enclose 10% Dep.\$.....

Balance (Due 10 days prior) \$.....

Forward (with deposit) to; The Treasurer, PO Box 453, Richmond 3121.

SUNDAY 6th.	<p>??? MYSTERY RIDE ???</p> <p>9.30 KBCP.</p> <p>Neville Baker leading.</p>	<p>Something different from one of our newer members. All we know is its approx 350kms from "Go to Whoa" and its in a Westerly direction. Got you curious?</p>
SUNDAY 13th.	<p>PAKENHAM MILITARY MUSEUM.</p> <p>9.30 KBCP.</p> <p>10.15 Hallam.</p> <p>Ian Payne leading.</p>	<p>Come along and view Australias LARGEST Military Vehicle Museum. The ride itself will be fairly short, (under 200km) & will encompass a pre-lunch visit to the museum then a ride through the Dandenongs to finish in the Boronia area.</p>
SUNDAY 20th	<p>LAKE EPPALOCK.</p> <p>Counter Lunch.</p> <p>9.30 KBCP.</p> <p>Steve Leyland leading.</p>	<p>Join with us for a run up to Eppalock & lunch at the BROLGA HOTEL. The route there will include Baccus Marsh, Lancefield & Redesdale. Trip home will depend on time available.</p>
SUNDAY 27th.	<p>MR MOTOCROSS.</p> <p>Round 2 - Broadford.</p> <p>9.30 KBCP.</p> <p>10.15 Whittlesea Servo.</p>	<p>Like to see how the Pro's ride in the dirt? Come with us & view this exciting form of motorcycling. Direct route to Broadford, with trip home depending on time and weather.</p>
<u>JUNE.</u>		
SUNDAY 3rd.	<p>APOLLO BAY.</p> <p>Mini Golf.</p> <p>9.30 KBCP.</p> <p>10.00 Laverton.</p> <p>Ben Warden leading.</p>	<p>Our annual golf tournament is held Rain, Hail or Shine, so join us for the usual G.O. road route to Apollo Bay. The run home will incorporate a short detour to Stevensons Falls then Deans Marsh to finish close to Melb. <u>Note.</u> NO DIRT.</p>
THURSDAY 7th.	<p>GENERAL MEETING.</p> <p>Club Hall 8.15pm Sharp.</p>	<p>This being the first meeting of the NEW COMMITTEE, come along & see how they perform. Also suggestions for the AUGUST to NOVEMBER itinerary will be called for.</p>
SATURDAY 9th to MONDAY 11th.	<p>**SWAN HILL**</p> <p>9.30 KBCP.</p> <p>Murray Browne leading.</p>	<p>Due to large Racing Carnival, Swan Hill is completely BOOKED OUT, therefore suggestions as to where we spend this long weekend would be welcome. Due to the Snow Season a North/West area is preferred.</p>

WHO'S NEWS

After Egg World ride we all headed back to Derek's home for a coffee where much fun was had with the Motorcycle GP game (never seen TOM crash so often) and the Pin-ball machine. While outside many had a ride on the minibike & Sandra's TS250, Funny how the Police arrived soon after. We now see what Derek means about his anti-bike neighbors.

Congratulations to Trevor Harris & Anne who tie-the-knot on May the 6th. The impending groome had a close one when a wayward cyclist slipped under his guard & attacked the XJ900. Resulting in Soft Tissue Injury (Squashed) to Trevor's right foot.

Hans has a new bike. Yes after much haggling (the Melb. Suzuki salesman is only now recovering) the old BMW has been traded in on another immaculate K100RS.

Potential member Alec Brown had a lucky escape from injury when he & his Katana 1100 crashed while on the Wilsons Prom ride. Although Alec suffered only bruising, his 10 year old bike requires in excess of \$3500 to bring it back to a rideable condition.

A suggestion has been put forward that the Club do a Motorcycle Tour of New Zealand in APRIL 1991. The idea would be to fly over & hire a bike. Members who are interested please contact the committee so we can assess numbers & seriously look at this idea.

"PARTY" 15th of May 1990 is an IMPORTANT DATE, not only is it the middle of the month but it is our Presidents 40th Birthday. So as a mark of respect, the Editor is organising a bit of a get-together on Saturday 19th May. Any member interested in attending, please refer to invitation elsewhere & return promptly so catering can be arranged.

Smile!....ex-member Terry Mountney, getting back into motorcycling, probably wished he hadn't after recently viewing a photo of his GPz900 averaging 163km/hr.

That equals = \$300 fine + 6 months license cancellation + 6 demerit points.

BEECHWORTH BUZZ

Single handed, thats Tom. Not content at showing us how to do One Arm pushups, he then demonstrates riding the Paris Dakar one handed....Down Mt Hotham!!!

Ray, I want to enjoy the scenery, goes rear rider for the run down Mt Buffalo.....
....for the first half-a-dozen corners! Sorry I couldn't help myself?

Steve remarked at Mt Buffalo Kiosk, you could still tell this was Ned Kelly country..
.....the food PRICES where highway robbery.

The MTCV basketball match quickly degenerated into something resembling RUGBY, with many a player suffering the effects of gravel rash & strained ligaments. Harry Chow being the worst effected, finding out later he was unable to flex his foot sufficiently to change gears on his GSXR.

For the run down from Mt Hotham we formed a six-bike-freight-train with Andrea leading and Tom at the rear (Yes, Tom went rear rider) "Talk about an adrenalin pumper".

The sedate game of Ping-Pong took on a Grand Final atmosphere as the MTCV'ers battled their way through the ranks. With Hans finally taking the honours as top Ping-Ponger.

Ray was certainly enjoying himself (I'll regret this in the morning) Party-animal at night and Bitumen-burner by day. At one stage he and Tom swapped bikes. Both came away suitably impressed with the others mount.

Our efforts at avoiding the Beechworth Easter Parade backfired when the next day we got caught up in the Harrietville Parade. "Only a Scotsman could invent something like that" remarked Ray, pointing to a set of Bagpipes!

Must be the thin air! We passed a guy with Grass Skis on, skiing his way UP the Mt Hotham road!

MOTORCYCLE TOURING CLUB OF VICTORIA (INC.)

General Meeting Thursday 5th April

Jika Jika Community Hall

Present: 28 members and visitors.

Chair: Ian Payne.

Apologies: Graeme Frampton, Pam Hutchinson.

No minutes were taken at the March meeting

Club Captains Report: Mt. Buller: 15 Bikes, 18 people, 500 km.
2 riders booked for speeding.
Trafalgar: 11 Bikes, 12 people, 400 km.
Phillip Is.: 33 People, 18 bikes participated
in the racing.
Archeron Way: 29 Bikes, 32 people, 350 km.
Egg World: 19 Bikes, 1 van, 27 people, 300 km.

Treasurers Report: Income \$152.00
Expences \$240.27
Balance \$509.09

Correspondance: Inverloch fun festival committee.
letter of thanks for attending the Australia
Day parade.

General Business: : A.G.M. Next meeting. nominations were called fo:
Treasurer:
Trevor Harris, nom. Steve Leyland. sec.
Socal Secretary:
Rita, nom. Andrea Sirninger, sec. Steve.
: Constitutional changes as printed in magazine.
: A partiton against the lights on legislation.
: Last Laugh 20th July Bookings taken now.
Archaos Circus. in Melbourne at present
: Local Councils will now have the power to decide
where parking on footparths will be allowed.
: Next open day at Phillip Island is on the
29 th April.

Door Prize

Rose won a can of chain lube.

Meeting closed

supper.

TRIP ORGANIZED BY GARRY CLIFTON.

PETER:	GT 750.	ROD & ROSE:	VF 1000.
STEVE:	GPX 750.	IAN & KERRY:	XJ 900.
ANDREA:	KAT 750.	DEREK & SANDRA:	GSXR 1100.
GARRY:	CBR 1000.	SAM & RITA:	FZR 1000.
DARREL:	GSXR 1100.	ANDREW & PAM:	K 100 RS.
MICHAEL:	GSXR 750.	BEN & VICKI:	ZX 10.
HARRY:	GSXR 750.	JOHN:	FZR 1000.
HANS:	K 100 RS.	ERIC:	FZR 600.
ANDREA:	R 80 GS.	MARK:	YAM 500.
TOM:	R 80 GS.		

When Pamela and I arrived ON TIME at K.B.C.P. for the usual 9.30am. start, we were pleased to see such a large turnout; nineteen bikes and twenty five people.

Nobody seemed to be in any hurry as all eyes were on Steve Leyland's new mount, a GPX 750. Like myself, there were others who were surprized to see Steve with a new bike, which we hope does not follow a similar path to his previous machines.

After some last minute maintenance to the GPX 750, we headed out of the city along the Calder Highway to Digger's Rest, from where we took the back roads to Ballan, where we stopped for morning tea. We were forced to enter town via the back streets, as they were celebrating the Ballan Festival. Here we met up with Dot and the girls and spent the next half hour looking at the various street stalls of local produce and handcrafts.

On the road again and only a short ride to our destination, EGG WORLD, where we met up with Hans. From the outside Egg World looked rather promising with the world's largest egg there before our eyes. Upon entering, there was not a "happy hen" to be seen, only roast chickens in the restaurant and toy roosters in the souvenir shop. Turning our attention elsewhere, the children's playground brought out the big kid in all of us when we took control of the merry-go-round. At this stage none of us had eaten, which was just as well, as the rides were enough to bring up your breakfast.

Passing through the menagerie of goats, sheep, ducks and geese, we returned to the restaurant for lunch. Talk about slow - it took me forty minutes just to get a cup of coffee, and even longer for Rod and Rose to get a sandwich. We won't eat there again.

Keeping in the spirit of April Fools' Day, a Club member decided to change the Rooster and Hen signs on the toilet doors, so we had a good laugh watching the expressions on people's faces when they realized they had entered the wrong door.

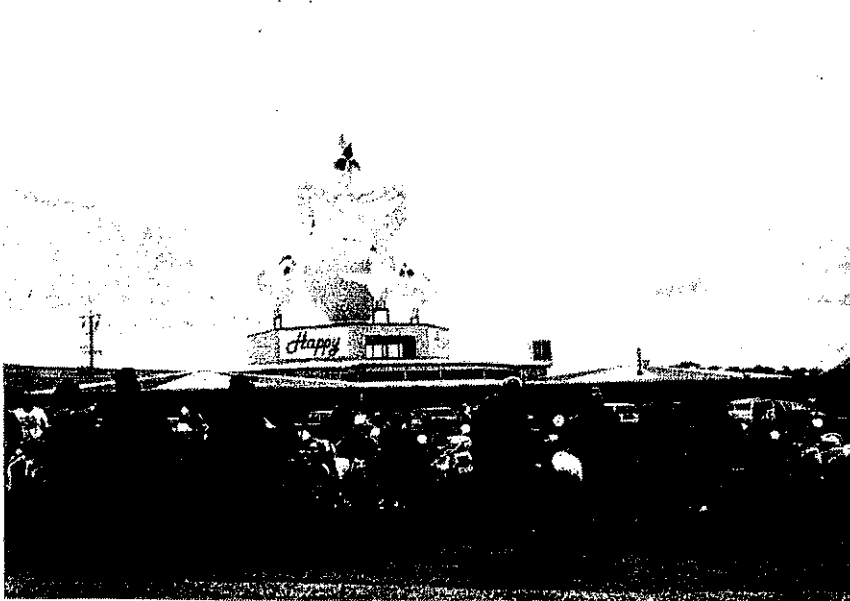
After lunch it was time to say goodbye to Henry the cockatoo - watch your fingers Ian - and make tracks. About as close as we got to the happy hens was when Dot bought a dozen eggs.

Back on the road again, we returned to Meredith for a fuel stop, then took to the back roads again for some fast but safe sweepers. We didn't strike any traffic until we passed through Bacchus Marsh and on to the Western Highway.

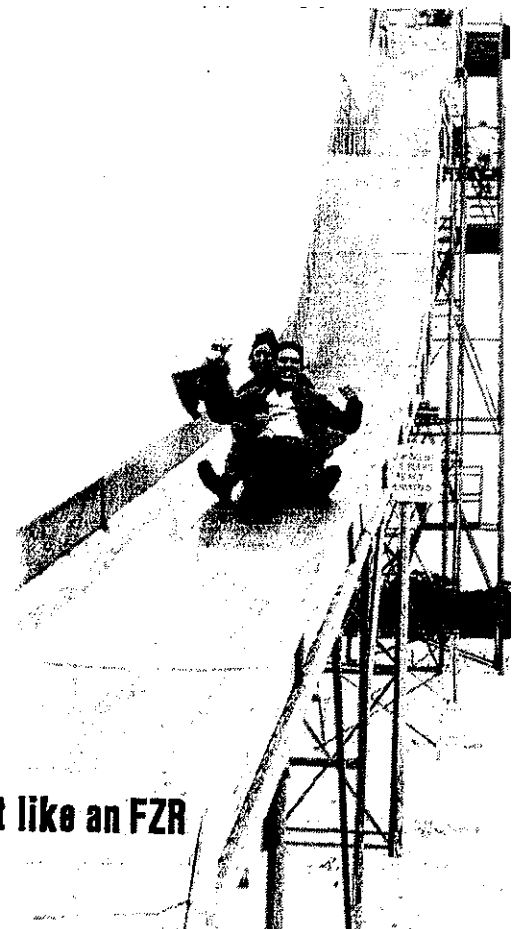
Our day's ride ended at Melton, where we discussed what might be the cause of Steve's new bike shaking its head on a straight but slightly bumpy road. Having ridden behind Steve for much of the day I was quite amazed to see just how unstable his bike really was. Good luck Steve, we are sure you will sort out the problem.

To sum up, we had a most enjoyable day, not too long a ride, time to have a leisurely lunch, fast but safe roads with no accidents. Fine but overcast weather, ideal for riding, and we arrived home at a decent hour. Thank you Garry.

Andrew and Pamela.



Egg World



Whee, Just like an FZR

Terry & Helen GPZ900R	Tom & Andi FZR1000
Martin & Katrina GPZ750	Shane & Leigh GPZ900
Sam & Rita FZR1000	Eric FZR600
John FZR1000	Darryl GSXR1100
Ben ZX10	Harry GSXR750
Alec 1100 Katana	Peter FZR1000
Steve GPX750	Chris GSXR750
David RGV250	David 650 Katana
Tony XJ900	

17 Bikes and 22 people (1 incident for the day)

After all the bikes arrived at the Hallam pickup, we started with the traditional chin-wag, when a workman stopped and told us to move on or get caught in a traffic jam caused by a truck with a very wide load (like heroes, we replied "what sort of truck could stop us") he replied "One with 180 WHEELS". Well within minutes we were on our way with Eric leading & Darryl rear rider. We headed down towards Pakenham then inland to Drouin and Korumburra for morning tea in leongatha.

After a brief stop for refuelling we were off again and travelling through Dumbalk to Turtons Creek, after a while I thought to myself thats not like Eric (who supposedly doesn't like dirt) leading us through all sorts of dirt tracks. There were quite interesting views and scenery on these roads, I didn't know this sort of country side existed out here. Every time we arrived at a corner, Eric was there studying the map being careful not to make a wrong turn or mistake. We eventually arrived at the Prom entrance just as it began to rain lightly. A quick ride up the mountain and we arrived at Tidal River for lunch. I approached Eric to tell him I liked the route and how it was good covering new ground, when he replied he had been LOST for most of the morning!!! Steve replied that Eric's biggest mistake was admitting he was lost. (good one to remember for future, ride leaders)

Abit behind schedule, we started lunch with a nice warm meal and a chin wag. Steve still not happy with his GPX's handling, Terry seemed to like his GPz900 (of course), Andi choosing to go two up with Tom (doesn't anything slow this man down), John & Eric, not admitting it, but I think they are starting to enjoy the dirt, Tony and David having just arrived stayed for the rest of the ride.

After some tucker and fuel we set off towards Inverloch and a coffee, then off again along the coast road. Not long out of town Alec comes to grief, apparently on a left hand sweeper he had his bike cranked over a bit too far and the side-stand scraped on the road digging into the tar and bringing him down, the bike slid for approx 50 metres with Alec performing acrobatic skills with a few cartwheels in mid air. The bike and Alec eventually going over a 5 metre cliff, first on the scene was Rita, she looked around the scrub where the bike was but no sign of Alec, we started calling when Peter, on the top of the cliff, sights Alec lying about 20 metres away from the bike.

cont,

Apart from some bruising and scratches, Alec was OK and could stand up (God was definately on that corner) from then on Ben had the privilege of a pillion (Alec) having left Vicki home doing the housework, (Ben, how do you do it, I must get some tips). Finally catching up with the others, we slowly rode to Cranbourne where the ride broke up, funny how an accident will slow us down!

P.S. Eric, although the ride was not pre-ridden (and you got lost), I was most impressed with the new roads and scenery I saw and I'am sure this would apply to the majority of other riders on the day. So therefore I will definately be on your next ride.

Sam & Rita.



Beechworth

Peter, with a bit of Stray....cat

Mountainous Touring Club at Mt.BUFFALO



Hitting the Heights
at the Hibernian (Pub)

BEECHWORTH EASTER WEEKEND 1990

The venue for the MCTCV Inc. Easter weekend away this year was the "Old Priory" at Beechworth in north eastern Victoria. The Old Priory is a rather ancient, four storey, rambling building that was originally built as a Convent and has since been converted to dormitory style accommodation for tourists. The Priory has some rather quaint ways, you have to serve yourself, wash up your own plates, make your own bed and generally get everything for yourself.

Ian, Kerry, Tom, Andrea, Harry, Mick, Steve and Peter met at the KBCP or Whittlesea and travelled up to Beechworth via Yea, Mansfield, Whitfield and Oxley to arrive at Beechworth at about 3pm. I had a bit of a late start so decided to travel straight up the freeway and for me the trip was pretty boring, didn't see a cop anywhere on the freeway - so much for police traffic blitzes. In fact I only saw one cop the whole weekend away.

Friday afternoon was pretty quite, a bit of sightseeing around town, a coffee and chat at the local cake shop, a few beers at the pub with the odd 6 pack purchased for the night back at the Priory. Dinner at the Priory was a cook-your-own affair with myself and Tom doing our best to turn some lovely Trout into charcoal on the BBQ. After dinner we retired to the "games room" for the MTCV version of ping pong. This version of ping pong varied from 1 a side to 5 a side, definitely interesting. Friday also brought the rain, and boy did it come down on Friday night but with a few beers under the belt who cares.

Saturday began very overcast, cold and depressing so for something to do everyone got stuck into Steve's bike. The forks were dropped, the bike stringlined and generally checked out for correct assembly, apparently the work paid off as Steve's complaints gradually decreased over the weekend. By this time the weather had begun to clear so someone suggested a game of Basketball, but the way it turned out it was more like Rugby with a round ball on a cement field.

After lunch we headed out for a ride through the hills to Mt. Buffalo. The ride up to the top was interesting with the damp patches in the shade and the mobile chicanes getting in the way all the time. The view from the top was quite spectacular with the gliders flying up and down the valley looking very impressive. Someone suggested a 100 yd walk to see the underground river, which seemed quite reasonable till the 100 yards turned into 2 kms up and down a steep valley. I'm sure that a few people discovered some new muscles that day. On the way down the mountain we all stopped and had a look at where Steve took out a white post on the clubs last Snowy Mountains ride, nasty.

We arrived back at Beechworth to find our numbers swelled with the arrival of Dot, Gary and the Wurster Clan (Ken, Ann & Hans), (also much later on, Luke arrived) with Grandpa Scrooge McWurster showing off his new K100 and stating that he wasn't staying long...something about going to Albury via Cairns, and if he did stay he wasn't going to pay anyway. Much talking, lots of food, lots of booze, too much ping pong and that was Saturday finished.

Sunday arrived with a crystal clear sky which proved just too tempting so it was on with the bike gear & Tom, Andrea, Steve, Ian, Kerrie, Mick & I headed off into the hills. Harry was feeling a bit off so he headed off home and the Wurster clan and Peter headed off to visit family and friends elsewhere.

Unlike Saturday, the roads were dry as a bone and in perfect condition, so speeds tended to creep up a little and everyone got into the groove. We headed down through Myrtleford and Ovens, turned left and cut across to the Kiewa Valley Highway along a nice stretch of twisty road. At Tawonga we turned right for our first run over Tawonga Gap on our way to Mt Hotham. Naturally we continued up to the top of Mt Hotham which turned out to be pretty cold with strategically placed gravel on the odd corner or two which really impressed Steve ('cause Steve likes gravel on corners). Anyway, because it was bloody cold we didn't stay on the top long, so it was off back down to equalise rubber wear on the tyres. Back over Tawonga Gap, this time there were a couple of Chook chasers at the top that thought maybe they would blow us off in the twisties..ho ho, they didn't stay in our mirrors for too long. The next target was Falls Creek which proved to be the best run of the day, the same thing again, up to the top, freezing cold so come back down again. By this time it was getting a bit late so we decided to head back to Beechworth. It had been an excellent day, 1,000's of corners (even more than Eric's 1431 corner ride), beautiful weather, stunning scenery, riding as a group through the twisties (Tom restrained himself), swapping bikes to compare handling, by the time we arrived at Beechworth everyone was on a real high.

This time we had more club members waiting, Rod, Rose, Andrew and Pam had travelled up by car and were staying nearby doing their own thing so they decided to pay us a visit. That night we all had dinner at the local pub which turned out to be quite a good night, naturally when we finished we attacked the ping pong tables again.

Monday arrived bringing a sore head and thoughts of work on Tuesday. My weekend finished here as I wanted to get back to Melbourne around midday. My thanks to Ian for organising an excellent weekend away, and thanks to Tom for leading two really great rides.

Ray ZX

So you may ask, why you didn't know about this ride or why you weren't even invited, Simple really?

RIDERS

Andi (leader)
Anita
Rita
Leigh
Andrea (rear rider)

MOUNTS

TDR239
CBX250
XT200
VT250
KAT750

I woke up to a miserable cold & wet Saturday morning, kissed Tom goodbye, leaving him to the HOUSEWORK. Picked up Anita (who left the kids with her X) and Andrea and headed to Hallam, Rita's place, where we had arranged to meet. Leigh showed up not long after.

We were all fired up ready to go, but were delayed by Sam (not that he didn't want Rita to go or anything), he couldn't get the XT's indicators working. So after coffee & biscuits and still no indicators, Rita braved the elements without them.

From Hallam we headed off to Berwick and up to Emerald, where we encountered some of the worst roadworks imaginable, in this Godforsaken weather too. Welcome to the world of motorcycling girls. Good initiation eh? The XT200 can sure fish-tale when you give it a fist full, hang in there Rita. Then from Emerald towards Gembrook, through to Woori Yallock and over to Healesville, our first stop, lunch and petrol. Rita's tank holds a whole 7 LITRES! At least the rain had eased off a bit. Andrea's Bellstaff pants had finally disintergrated and she was soaked through and Leigh, not wearing enough, was frozen.

After lunch we headed to Yarra Glen and through the Christmas Hills. The rain had stopped and the pace started to pick-up, once we got by that truck. On to Kangaroo Ground and then Warrendyte, where Andrea, water logged, headed home & Anita took over the rear.

Warrendyte to Ringwood, through the suburbs and down Stud Road (here comes the rain again) onto the Freeway and back to Rita's at Hallam where Sam had a wonderful fire blazing in the pot-belly (nearly), thanks Sam.

Covered about 200kms, not bad for the poor conditions and although the weather was not the most desirable, the day was still a good one, and I'm sure something was gained by the experience.

Andi TDR250

=====
"Thanks to Andi"

A SPECIAL thanks to Andi for organising a Girls Ride. Even though the weather was very cold and wet, I had a great time. Thanks for being so patient. Thanks also to the other girls that came on the ride.

Andi...TDR250, Anita...CBX250, Andrea...Katana750

Leigh...VT250 (L), Rita...XT200 (L)

P.S. It was my first real ride.

Thanks, Rita.

Yes, a very professional effort of organising this run by Ben and Vicki, for instance the following (plus a map) was handed to all card sharps at the Yarra Glen pickup.

MTCV Poker Run

April 22 nd. 1990

Leader; Ben and Vicki

Rear Rider; Peter P

Proposed Route and Distances:

KBCP to Yarra Glen	60 KM.
Yarra Glen to Seymour	108 KM.
Seymour to Woodend	114 KM.
Woodend to Whittlesea	80 KM.

STOPS

Yarra Glen (morning tea)	1st card
Seymour (lunch)	2nd card
near Baynton. regroup)	3 rd card
Woodend (afternoon tea)	4th card
Whittlesea (break up)	5th card.

Petrol, food and toilets at all stops except Baynton.

This reporter did not " do" the KBCP - Yarra Glen leg but the following were in the game (Pres. Ian caught up with the group prior to lunch).

GPX 750 Gary	ZX10	Ben, Vicki	GSXR1100 Darryl
GPX 750 Steve	CB250RS	Jon	K100RS Jack
GT750 Peter P	GSXR1100	Derek, Sandra	GPX 750 Luke,Tanya
XZ 550 Mark	GPZ 1000RX	Dave	XJ 900 Ian

Most important-----the house rules for this poker game were written down by Ben before we left Yarra Glen.

Now that heads off any debate, upset, resignation, sulking, etc at the prize giving ceremony.

Not much to say about the ride except all good roads,
little weather, few cars(except the one that drifted out of a
corner almost into the lead bike..... bit of a problem if they
hit , as the card pack was on the ZX10 !)

Rather than fill this mag. with everyone's card, the
winner's hand was:-

9H - 10 S - JH - QS - KC

Yes folks, thats a King high straight, enough to win a cattle
station, but in this case \$ 30.

Was one more point..... oh yes, the winner was the
Luke- Tanya team.

Incidentally Luke's GPX suffered a loose mirror on the
ride, so perhaps the \$ 30 will go toward the \$105.60 for a new
one (you know the story on spares cost!)

Jack Gamblin' Man Youdan

DIRT ROADS?

It has been said by some club members that we do not cover enough dirt on our rides,
or too few rides incorporate good dirt stretches. Others say that today's modern sports
bikes, which predominate club rides, are not designed for dirt roads.

However, dirt roads should still be incorporated into a large portion of club rides as they
provide riders with valuable experience. Bike control is essential with the increase in power
and abilities of the bikes that many club members ride. Dirt roads force speeds down and
emphasise careful handling of bikes in order to prevent them coming down. If a rider
drops his/her bike it is the same as if he/she were on a bitumen road, ie they were
brought down by an error of judgement, usually self inflicted.

Riding for even a short period of time with the touring club tends to improve a person's
general riding abilities. A large part of the improvement is in handling bikes at speed on
the open road. Everybody gets something different from riding but it certainly does no
harm to improve over a broader spectrum of areas. Riders that do not want to take the
chance of damage or excessive wear to their machinery are under no obligation to
participate in rides that incorporate dirt, just as some club members choose not to go on
very fast runs, or leave their pillions behind on twisty rides, etc.

Most club members are fortunate in that they have a fair idea how twisty or fast a ride will
be depending on the area covered or who is leading. Unfortunately there is no system in
our itinerary for marking rides which include an unusual amount of dirt. In light of the
potential risk a system should be devised rather than the current marking for rides that
have no dirt.

Luke (GPX 750)

PRESIDENT's REPORT 1989/90.

The last 12 months has been quite productive for the MTCV, with an increase in membership of approx. 25%. This is an excellent achievement and primarily brought about by the extensive advertising campaign promoting the activities of our Club in motorcycle orientated magazines (AMCN) and localized distribution of our itineraries (six metropolitan motorcycle outlets). Through this advertising our Sunday rides have seen a large influx of new riders, although not all join enough to show that our Club still caters for a certain niche of the motorcycling fraternity.

The addition of new members has also brought about a subtle change in the style and type of ride now undertaken, with a more social aspect emerging and rides to a specific destination/attraction and weekends away proving most popular. Of course there will always be provision for our traditional Spurs/GO road type of ride as this is what sets our club apart, its diverse and interesting itinerary. The last 12 months being no exception, although some rides provoked controversy, overall they represent a well balanced selection of rides and social outings, "Something for everyone", Congratulations to all involved.

One negative aspect of this influx of new riders has been the amount of accidents involving them while on club rides and although none being seriously hurt, any injury or crash sustained on Club rides needs to be fully investigated. With this in mind, and following discussion and debate amongst the membership, the Committee have responded with publications such as "Information for Prospective Members" and "Aspects of Leading a Good Ride", both designed to alert riders and leaders of potential problem areas encountered on Club rides. I believe the addition of these and other measures has endowed our organisation with a more professional and responsible attitude.

Of course the Club is only as good as the people in it and therefore a large proportion of our success must be directed to you the members. You make the Club what it is, so from me, a sincere thankyou for your support, enthusiasm and continuous dedication over the last 12 months.

Thanks must also be directed to the outgoing Committee, many of whom have declined nominations for a further term in office. So thanks to; Murray BROWNE for Vice Presiding when the occasion required, Vicki PILLER for keeping the Club on a secure financial footing, Tony GUSTUS the secretarial duties, Graeme FRAMPTON the legible minute taking, Kerrie GOODING for keeping the hordes fed, Ben WARDEN, again, your many years of Club experience have helped in the decision making of the Committee and Steve LEYLAND for your overseeing of Club rides and enthusiastic promotion of the Club. My sincere thanks to all of you and look forward to your continuing involvement with the Club.

To the incoming committee, I extend my best wishes for a successful 12 months at the helm of our Club.

So in conclusion, the last 12 months has brought me great pride and satisfaction on seeing the Club forge further ahead fostering friendship and Club spirit amongst its members.



IAN PAYNE,
PRESIDENT MTCV 1989/90

Captains Report 89/90

With around 450kms per Sunday, a couple of Night Rides as well as the Snowy Mountains and Beechworth weekends (1750km & 1350km respectively) some would think thats nothing more than a heap of tyre changes, but with around 20 bikes per ride it represents a level of activity expected by this Club's fanatical membership. "I suppose thats what we call enjoyment". And its that activity and those members that makes our Club, easily the premier motor-cycling club in Victoria, one that I've been very proud to represent as Captain for the past 12 months, for which I thank you, the members, very much for that privilege.

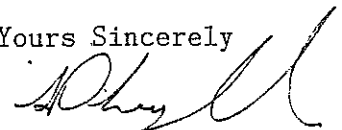
Sure there are richer clubs and those that have more members but none can compare with our year round itinerary of events, an itinerary that is only possible due to a high level of commitment from both the Committee and the ordinary members. Les Leahy's Navigation Trial, Tom Saville's Snowy Mountains and Murray Browne's Water-skiing are only three examples from a year of enormous diversity and fun.

All our rides have been interesting and enjoyable with most leaders going to extraordinary lengths to ensure that their day will be a success. Many pre-ride their ride to familiarize themselves with new roads or sometimes only to check out well known roads for recent changes such as loose gravel or roadworks, 'Amazing' but lets face it, being a RIDERS club we rely heavily on the organizing skills and commitments of these leaders and it is they who are very much the unsung-heroes of the Club and whom we are very much indebted, so to all leaders please except my sincere thanks on behalf of all club members for this year of exceptional motorcycling.

Just as important for the smooth running of a club ride is our rear rider, their job can be just as difficult and demanding as that of the leaders, and put simply, I have, as have most, enjoyed the fruits of the hard work of a relative few. Thanks fellas.

Most of us are aware of the many "first-timers" we entertain on our Sunday rides and their unfamiliarity causing some problems along the way, but I believe the structure of our rides (leader, corner-markers, rear-rider etc) copes very well and any problems we may have had over the year are, in reflection, too insignificant to detail, this fact tends to be born out with many of these riders seeking membership which can only further strengthen our Club. P.S. Full marks to Tom, Andi & Les for initiating the AMCN ad and Ray for the continual updates.

Yours Sincerely



CLUB CAPTAIN

MOTORCYCLE TOURING CLUB OF VICTORIA (INC.)

STATEMENT OF RECEIPTS AND PAYMENTS

1.5.89 TO 30.4.90

For comparison
1988/89

RECEIPTS

1989/90

\$

1,075.00

234.27

10.00

-

-

43.70

42.80

76.00

59.00

165.00

10.00

1,715.77

-

1,715.77

Membership Fees

Supper Fees

Christmas Party Fees

Earplug Sales

Coaster Sales

Auction Proceeds (nett)

Cheque Account Interest

Sale of Badges/Stickets

Sale of T-shirts

Prepayments - accommodation

Donation

\$

1,260.00

488.95

15.00

16.80

94.00

72.50

14.21

114.00

49.00

620.00

16.00

2,760.46

26.69

2,787.15

Deficit

PAYMENTS

340.00

104.70

348.65

-

29.40

229.04

24.00

99.60

-

37.00

3.73

105.00

-

25.00

50.00

23.00

45.00

23.60

-

-

1,487.72

228.05

1,715.77

Printing - itineraries

- magazines

Supper Supplies

Raffle Prizes

Door Prizes

Postage - magazines, etc.

P.O. Box rental

Christmas Party - supplies

Purchase Adhesive Club Stickers

Trophies or prizes

Bank Fees

Accommodation Fees

Emergency Kit

Hall rental

Ad in Motorcycle News

Registration fee - incorporation

Purchase of 200 ear plugs for members

New member road maps

Pottery Club Coasters

Donation

400.00

348.95

197.57

-

44.55

347.74

30.00

64.29

308.50

40.10

3.15

680.00

-

169.00

-

24.10

-

14.70

94.50

20.00

2,787.15

-

2,787.15

Surplus

FINANCE REPORT 1989/90

Cash Book Balance

Balance brought forward 1988/89	\$579.63
Add receipts	\$2,760.46
Deduct payments	<u>(\$2,787.15)</u>
Cash Book balance as at 30/4/90	\$552.94 CREDIT

This is represented by:-

Cheque Account State Bank of Victoria	\$552.94 CREDIT
---------------------------------------	-----------------

Assets

Adhesive badges	179 @ \$1.50	\$268.50
Badges - metal	3 @ \$5.00	\$15.00
Patches - cloth	5 @ \$3.00	\$15.00
Earplugs	93 @ \$0.30	\$27.90
Pottery Club Coasters	2 @ \$10 (for 6) & 2 @ \$2.00 ea.	\$24.00
T-shirts	1 @ \$7.00	<u>\$7.00</u>
		<u>\$357.40</u>
Duplicator and accessories		\$309.00
Electric typewriter		\$300.00
Electric Stapler		\$198.45
Urn		<u>\$60.00</u>
Value (at cost)		<u>\$867.45</u>



Vicki Piller
Treasurer
Motorcycle Touring Club of Victoria, Inc.
30th April, 1990.

MOTORCYCLE TOURING CLUB OF VICTORIA INC. MEMBERSHIP LIST

26-4-90

Members	Address	Home	Work	Motorcycle(s)
Adams, Jon	1/77 Beach Rd, Mentone, 3194	583-9211	583-9211	Suzuki GSX1100F
% Baker, Neville	52 Tyquin St, Laverton Nth, 3026	369-4559	358-1120	Kawasaki 1000RX
Barnes, Mick	5 John St, Williamstown, 3016	397-1640		Kawasaki GPz500s
Bastock, Martin	1/4 Swinton Ave., Kew, 3101	861-7628	895-2895	
Bloxham, Frank	41 Albert St, Mt Waverley, 3149	807-5212	420-8277	BMW R80 G/S
Bradshaw, Ross	1/13 Orchid St, Heathmont, 3135	720-5317	603-4111	Kawasaki GTR1000
Brew, Max	RSD 9090 Willowgrove, 3825	051-271-222		Kawasaki GPz900
# Brown, Ken	Residential: Cnr Wilkes and Old Sale Rds			
Browne, Murray	294 McKinnon Rd., McKinnon, 3204	578-3403		Honda 175CD
# Carron, Fred	2 Ethel St, Oak Park, 3046	306-5430		Yamaha XJ900
+ Chan, Michael	38 Valentine St, Ivanhoe, 3079	49-2776		
% Chow, Harry	8 Sargon Grv, Gardenvale, 3185	569-5917	828-8413	Suzuki GSXR750H
+ Chivers, Darryl	83 Loch Rd, Dandenong, 3175	701-0150		Suzuki GSXR750J
Clifton, Gary	22 Quinn St, Heidelberg, 3084	459-7798	344-7047	GSXR1100H
Clowes, John	3 Sefton St, Pascoe Vale, 3044	306-7071		Honda CBR1000FK
% Cole, Dave	3 Moore Ave, Croydon, 3136	723-3940	723-4041	Yamaha FZR1000
Dallalana, Danny	70 Croyden Rd, Surrey Hills, 3127			Kawasaki GPz1000RX
Davis, Mike	133 Mitchell St, East Brunswick, 3057	386-0453		Kawasaki Z500
% Dobson, Sandra	12 Rolland Crt., Montmorency, 3094	439-2378		
Dodds, Chris	12 Murrabit Gve, Taylors Lakes, 3038	390-1878	339-6069	Suzuki TS250
Dunn, Andrew	51 John St, Elwood, 3184	531-9379	690-2090	Suzuki GSXR-750
Dwyer, Peter	3/17 Wimbledon Ave, Elwood, 3184	531-8034		BMW K100RS
Ekin, Barry	P.O. Box 57, Altona, 3018	398-2322	398-2322	Yamaha XJ900
Fagan, Mick	Site 106, Kingston Lodge			Suzuki GSX750ESD
Faldon, Bruce	Caravan Park, Carrum Downs, 3201			
Frampton, Graeme	33 Flowerdale Rd., Moorabbin, 3189	555-7651	663-2201	BMW R100CS
	71 Banff St, Reservoir, 3073	460-2979		BMW K100RS
	8 Norval Tce, Altona Bay, 3028	369-6332	646-1129	BMW GS800
				BMW K100RT
Gooding, Kerrie	2/3 Leroux St, Oakleigh, 3166	563-2410		
Gouthro, Anita	4 Ralph St, Blackburn, 3130	878-5657	895-3417	Honda CBX250
Green, Vince	2 Dugdale St, Taree, 2430	065-523-105	065-51-0088	Yamaha XJ900
Gustus, Tony	18 Kingston St, Mordialloc, 3195	587-2921	706-5099	Yamaha XJ900
Harris, Trevor	6/105 Locksley Rd, Ivanhoe, 3079	497-1008	654-6644	Yamaha XJ900
Heath, Robyn	5 John St, Williamstown, 3016	397-1640	810-1511	Kawasaki GPz500S
Hobert, Eric	79 Kallista-Emerald Rd, The Patch, 3792	756-7570		Kawasaki GPz900
Hutchinson, Pamela	9 Macey St, Croydon, 3136			
Johnson, Nicholas	6 Inverness Crt., Croydon, 3136	725-8953		
Kemke, Steve	3 (Lot 18) Hazford St, Healesville, 3777	059-62-4773		
King, Ross	23 Nicholson St, Essendon, 3040	370-9479	688-3400	Yamaha FZR1000
Land, Mark	19 Locher Ave, Keon Park, 3073	469-4134	466-3971	Yamaha XJ900
# Leahy, Les	3/5 High Rd., Camberwell, 3124			BMW K100RS
+ Leyland, Steve	Honeyhush Caravan Park	29-6505	889-6505	Suzuki GSXR-1100
	6 Leakes Rd., Laverton North, 3026			Kawasaki GPx750
+ Makin, Eric	3 Moore Ave, Croydon, 3136	723-3940	350-3600	Yamaha FZR600
+ Miller, Harold	25 Velma Gr., Ringwood East, 3135	870-3402		Yamaha FZR600
Miskin, Rod	18 Linlithgow St, Mitcham, 3132	874-5569	568-2189	Honda VF1000FII
Moreland, Peter	38 Kidderminster Drv., Wantirna, 3152	801-6346		Yamaha FJ1200
Osborn, Gary	11 Aberdeen Rd., Blackburn Sth., 3130	877-3231		Kawasaki GTR1000
% Parker, Angus	11 Hillside Ave, Bentleigh, 3204	557-4833		Honda CB900F2
Payne, Ian	2/3 Leroux St, Oakleigh, 3166	563-2410	550-6428	Yamaha XJ900
# Philferan, Peter	19 Aird St, Camberwell, 3124	813-3518		Honda 750 Four
				Kawasaki GT750

* Piller, Vicki	12 Timor Parade, West Heidelberg, 3081	45-4479	267-1666	
Pollett, Brenda	13 Eden St, Cheltenham, 3192	583-7848	555-5355	
Pope, Wayne	Lot 20B, Talbot Clunes Rd, Dunach, 3371			Honda CBR1000
Richardson, Luke	4 Gladstone St, Yarraville, 3013	314-3801	536-3738	Kawasaki GPX750R
Riddett, Jon	20 Pine St, Surrey Hills, 3127	288-1946		Honda VF500F
+ Saville, Tom		848-7867		BMW R65LS
				BMW K100RS
				BMW R100GS
				Yamaha FZR1000
				BMW R80 G/S
% Schwarze, Dot	3 Sefton St, Pascoe Vale, 3044	306-7071		
# Shearer, Len	798 F'intreegully Rd, Wheelers HL, 3170	561-2857		
% Sidler, Andrea	2/87 Earl St, Kew, 3101	861-7884	611-5000	Katana 750
+ Sirianni, Sam	7 Surrey Close, Hallam, 3803	703-2405		Yamaha FZR1000
Sirianni, Rita	7 Surrey Close, Hallam, 3803	703-2405		
+ Siminger, Andrea		848-7867		Yamaha TDR250
Spackman, Terence	51 Main St, Blackburn, 3130	894-1473		Yamaha SRX600
% Staniforth, Simon	17 Martin St, Box Hill North, 3129	890-1230	428-0999	Honda CBR1000
Stekelenburg, Bob	9 Hastings Rd., East Hawthorn, 3123	82-1866	587-2910	BMW R100RS
Thomas, Ray	PO Box 242, Rosanna, 3084	458-4984		Kawasaki ZX10
Tomlinson, Derek	12 Murrabit Grv, Taylors Lakes, 3038	390-1878		Suzuki GSXR110
+* von Schill, Dean	12 Glenys Crt, Dandenong, 3175	791-4107		Yamaha FZ750
Waddell, Colin	439 Lwr Heidelberg Rd, Eaglemont, 3084	45-1433	344-2262	Yamaha FZ750
* Warden, Ben	12 Timor Parade, West Heidelberg, 3081	45-4479	344-5733	Kawasaki ZX10
Webb, Geoff	11 Stymie St, Kingsbury, 3083	460-3559	470-1455	Kawasaki Z500
Williams, John	1/5 Kingston Rd, Cheltenham, 3192		555-4858	Harley
Williams, Robert	14 Burt Cres., Moorabbin, 3189	555-9640		Harley
+ Wurster, Hans	21 Medford St, Altona, 3018	398-5575		BMW K100RS
Wurster, Ken	15 Redwood Drv, Hoppers Crossing, 3030	749-5575		BMW K100RS
Wurster, Ann	15 Redwood Drv, Hoppers Crossing, 3030	749-5575		
Youdan, Jack	22 Fort St, Mt. Waverley, 3149	232-3564	311-6555	

* changed address or phone number

+ new bike

life member

% new member

Life Members - 5

Full Members - 70

Total - 75

"MOTORCYCLE RACING"

500cc Motorcycle GP at Jerez - Sunday May the 6th.
Channel Nine will begin a 1½ hour delayed telecast at 10.50pm.

Denso Victorian Superbike Championships
Sunday May the 6th - Winton.

Mr. Motocross - Round 2,
Broadford, May 26 & 27.

*** The MTCV will be attending this event on Sunday the 27th ***