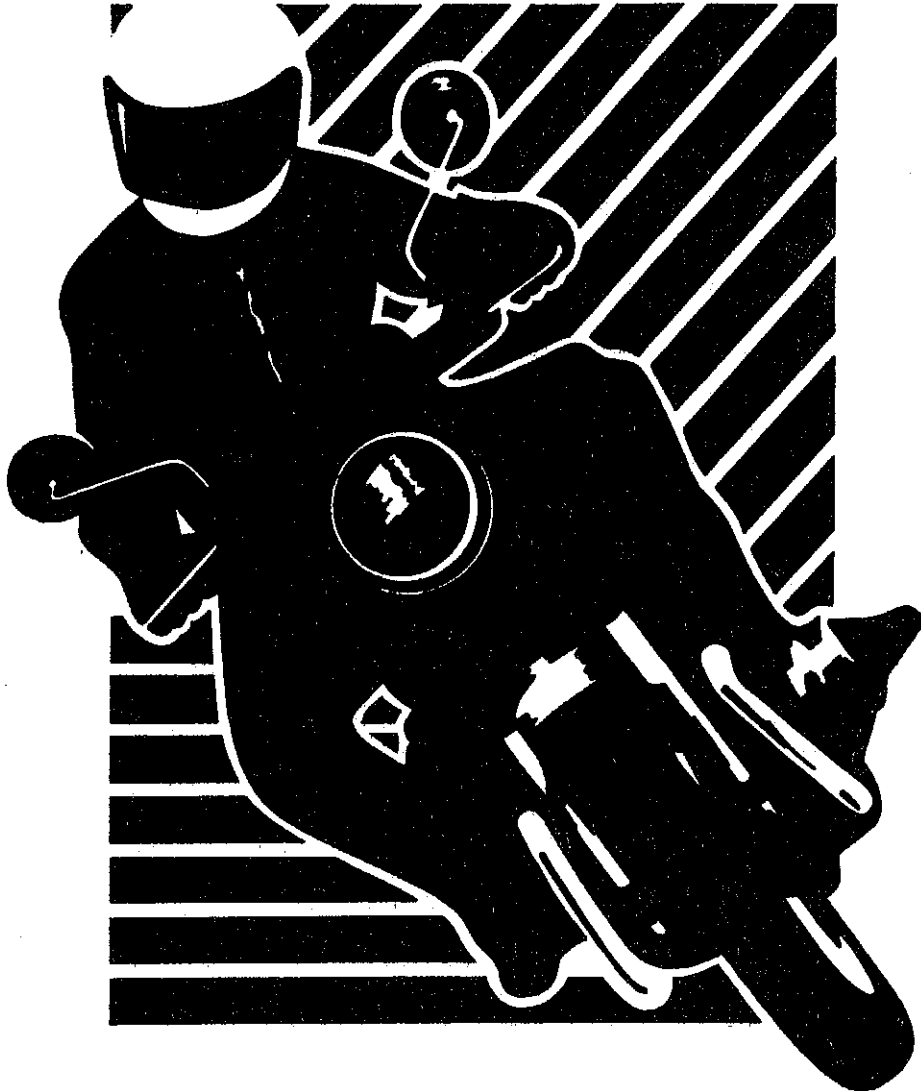


June 88

Good Vibrations



MOTORCYCLE TOURING CLUB OF VICTORIA

P.O. Box 453, Richmond 3121, Victoria

ITINERARY

JUNE 1988

SUNDAY 5th.	APOLLO BAY, 9.30 KBCP. 10.00 Laverton.	It's on again, the annual winter mini golf tournament. Rain or shine we play.
SATURDAY 11th & SUNDAY 12th.	BEECHWORTH. 9.30 KBCP.	Bookings for this weekend have now closed. Members going will be contacted by the organiser Ian Payne.
FRIDAY 17th.	DRACULA's THEATRE RESTUARANT. 7.15pm SHARP.	Bookings have also closed for this night. Those going will be notified and are remined this restuarant is now licensed.
SUNDAY 19th.	WERRIBEE PARK. 9,30 KBCP. Free entry.	Geoff Webb will lead us (weather permitting) to Gisborne, Trentham, Bacchus Marsh and Werribee for lunch. The afternoon will then be spent looking around this interesting site. (Shoes should be bough along to walk in).
SUNDAY 26th.	REEFTON SPUR. 9.30 KBCP. 10.30 Yarra Glen.	Here's your chance to equalise the wear on the tyres, centre / side stands, foot pegs and boots.
<u>JULY.</u>		
SUNDAY 3rd.	BASS WORM FARM. 9.30 KBCP. 10.15 Hallam.	Down to Gippsland to see these world famous earth worms "live". (some up to 3m long) All you ever wanted to Know about worms but were afraid to ask !
THURSDAY 7th.	GENERAL MEETING. Club Hall 8.15 Sharp.	This month we have a speaker from the "St.Johns Ambulance service", Don't miss IT.
SUNDAY 10th.	SOVEREIGN HILL, Ballarat. 9.00 KBCP.	Gary Clifton will lead us on a round about way up to this special attraction were there is plenty to see and do.

* ETTAMOGAH PUB, this is now a weekend event to be held on Saturday 23rd and Sunday 24th. Refer to last months newsletter for the details.

MINUTES OF THE MOTOR CYCLE TOURING CLUB OF VICTORIA (INC) HELD AT THE
JIKA JIKA COMMUNITY HALL, CORNER OF UNION AND PLANT STREETS NORTHCOTE
THURSDAY 15-5-88

MEETING OPENED 8-15 P.M.

CHAIRPERSON HANS WURSTER

PRESENT 29 MEMBERS AND VISITORS.

APOLOGIES NICK AND HARRY.

MINUTES OF PREVIOUS ACCEPTED BY MICK FAGIN SECONDED IAN PAYNE.

A WELCOME WAS EXTENDED TO MARTIN (FJ 1100) MARK FROM THE Q.L. CLUB.
AND SHARON (FROM W.A.)

TREASURER REPORT. AS PER THE CLUB MAGAZINE ACCEPTED AS READ. MOVED
HANS WURSTER SECONDED PETER PHILFERAN.

SECRETARY /CORRESPONDENCE NIL.

CLUB CAPTAINS REPORT. BEN WARDEN DEPUTISING. REPORTED ON PREVIOUS RIDES.
ALL WELL ATTENDED. ANDREW A NEW RIDER FELT OF IN THE FRASER NATIONAL PARK
NOT SERIOUSLY HURT. GOOD ATTENDANCES ATTRIBUTED TO THE MAGNIFICENT
WEATHER.

COMING RIDES- AS PER ITINERARY.

GENERAL BUSINESS. TREASURER HAD RECOMMENDED AN INCREASE IN ANNUAL FEES TO
\$20-00 OR A DECREASE IN SERVICES. RAFFLES TO HELP WITH COSTS NOT RECOMMENDED
AS IT SEEMS TO FALL TO A SMALL NUMBER TO SELL TICKETS. RAY THOMAS REQUESTED
THAT A DISCOUNT BE ALLOWED FOR PENSIONERS.

VOTE TAKEN ON FEE INCREASE. CARRIED, ONLY TWO VOTES AGAINST.

FEES TO INCREASE FROM 1-6-88.

AN ELECTRIC STAPLER REQUIRED. COST APPROXIMATELY \$100-
WEEKEND TRIPS

ETTOMAGOH- TONY GUSTUS GAVE A RUN DOWN ON WHAT TO EXPECT.

DRACULAS - BEECHWORTH - AS PER HANDOUTS.

BENS SUGGESTED LETTER TO PROSPECTIVE MEMBERS (SEE MAGAZINE) CONSTRUCTIVE
COMMENTS REQUIRED.

STATISTICS ON RIDES OVER PAST YEAR DISTRIBUTED.

CLUB ELECTIONS.-CALL FOR ANY MORE NOMINATIONS OR WITHDRAWAL OF NOMINATION

NIL

MEETING CLOSED 8-42 P.M.

MINUTES OF THE ANNUAL GENERAL MEETING OF THE MOTOR CYCLE TOURING CLUB OF
VICTORIA (INC) HELD AT THE JIKA JIKA COMMUNITY HALL CORNER OF UNION AND PLANT
STREETS NORTHCOTE 5-5-88

MEETING OPENED AT 8-43 P.M.

CHAIRPERSON HANS WURSTER

APOLOGIES NICK AND HARRY

PRESENT 29 MEMBERS AND VISITORS.

MINUTES OF PREVIOUS ANNUAL GENERAL MEETING READ. ACCEPTED BY KEN WURSTER
SECONDED IAN PAYNE.

BUSINESS ARISING FROM MINUTES NIL.

TREASURES REPORT. AS PER REPORT. ACCEPTED . HANS WURSTER SECONDED PETER HILFERAN.

GENERAL BUSINESS NIL

ELECTIONS.-

VOTES FOR CLUBMAN OF THE YEAR TO²⁴ RECORDED ON REVERSE OF VOTING PAPER.

NO FURTHER NOMINATIONS OR WITHDRAWALS

GEOFF WEBB APPOINTED AS ADJUCATOR AND MARTIN AS OVERSEER.

ALL POSITIONS DECLARED VACANT.

ELECTION RESULTS. PRESIDENT HANS WURSTER
VICE - PRESIDENT BEN WARDEN
SECRETARY ROSS KING
ASSISTANT SECRETARY TONY GUSTUS.
TREASURER VICKY PILLAR
SOCIAL SECRETARY KERRY GOODING
CLUB CAPTAIN ROSS GABRIEL
VICE-CAPTAIN GARY CLIFTON
EDITOR IAN PAYNE
PUBLIC OFFICER ROSS BRADSHAW.
CLUBMAN OF THE YEAR BEN WARDEN.

DOOR PRIZE TICKET No 20 LES LEAHY.

MEETING CLOSED AT 9-06 P.M.

AFTER THE MEETING MICK FAGIN SHOWED SOME OF HIS SLIDES-VERY MUCH APPRECIATED.

Minutes of the MTCV (Inc) Committee Meeting, held at the Eric Wrigley hotel
Richmond on the 12th of May 1988.

Meeting Opened; 7.30pm. First meeting of the new committee.

Present; Ben Warden (Vice Pres.), Vicki Piller (Treasurer),
Ross King (Secretary), Tony Gustus (Assistant Secretary),
Kerrie Gooding (Social Sec.), Ross Gabriel (Club Captain),
Gary Clifton (Vice Captain), Ian Payne (Editor).

Apologies; Hans Wurster (President).

Correspondance; Goldfields Rally 25/26 June.
Worlds End Rally 1/2 October.

General Business; 1/ Update and correct the membership list. Revised list to be
published in July newsletter.

2/ Information letter for prospective members. A short cover
note to be included when posted out. Also the letter to be
given to people on their first ride with the club.

3/ New riders should not be required to corner mark until they
feel confident to do so.

4/ Arm bands to be worn by leaders and rear riders. Old arm
bands to be returned. Ad in magazine.....(Ian Payne).
New ones to be made.....(Ben Warden).

Arm bands will then be kept in the Emergancy kit and will be
on trial for effectiveness & visability, if not successful we
will try the reflective vests.

5/ Safety/Emergancy Kit, Club Captain/Vice Captain or next ride
leader to ensure the kit is present on next ride.

6/ Club Captain/Vice Captain should discretely chaperone new
riders until they appear confident with the ride and corner
marking system.

7/ The rear rider must be patient with slow riders, keeping well
back so as not to put pressure on them. Ride leaders to nominate
rear riders on each ride, not necessarily the smallest bike.

8/ Committee position duties to be clarified.....(Tony Gustus)

9/ Club to buy ear plugs in bulk and sell to members @ 25/30¢ each.
(200 pair=\$42.....Ian Payne)

10/ Use club stock items as door prizes or include these items
as a new member joining kit. ie. Badge, Cloth patch, sticker,
map, itinerary, info sheet. Discussion to continue.

Committee Minutes cont;

General Discussion;

- 1/ Ross Gabriel raised several points concerning the speed at which club rides were run at and how this had given the club a reputation of being a racing club.
- 2/ The overall pace of the ride needs to be better controlled by the leader with stops to regroup ect.
- 3/ Ride leaving times to stay at 9.30am unless deemed necessary due to the length of the ride. An earlier start will be accepted.
- 4/ Questionnaire to be sent to members to gather opinions on current and future club activities.
- 5/ A bike service day to be on next itinerary, content and location to be assessed.
- 6/ St. John's Ambulance officer to give talk at a future meeting ...(Ross King). Gary Clifton will give a slide show on his trip to EXPO 88. Motorcycling videos to be shown at meetings but will need VCR and TV. Also have a competetion at meetings, ie. Darts or Hookey.
- 7/ As a future event hire a race track. Look at feasibility of hiring Winton in conjunction with another club.

Meeting Closed; 9.30pm.

WAFFLE

Excellant turnout at last meeting, not sure if it was for the AGM or Mick Fagan's slides. And what a collection, with early Club rides, interesting overseas pics and Mick's bike poised in some very inaccessible places, great stuff. My favourite was the Volks/Toyota auto powered Goldwing outfit. It lacked power so the owner refitted it with a P76 V8 engine and auto transmission. Mick's commentary was also great.

Club Fees are now \$20 per annum. Not much when you think about it.

Heard Ken's BMW fell over while he was cleaning it, from the langauge Hans thought it had fallen on top of Ken!

Ettamogah Pub weekend is shaping up to be great so if you haven't reserved a spot contact Tony Gustus quick.

Vince Green hasn't changed much. He and Gary Clifton while riding up to Expo where passed by some other motorcyclists travelling fast, that was the last Gary saw of Vince until the next town.

LAKE GOLDSMITH STEAM RALLY. 1st of MAY 1988,

17 bikes, 19 people; Ben GPz900, Hans K100RS, Ian + Kerrie GT750, Ken K100RS,
Bob R65, Andrew K100RS, John R65, Ian K100RT (New rider),
Frank R80GS, Rocky VF1000 (second ride), Gary FJ1200, Steve VF750, Tony XJ900,
Gary + Velga GTR1000, Ross GSX1100, Peter GT750 & Bob XJ900.

Perfect weather for riding, 25° and sunny. Tony Gustus leading and Peter P rear rider, through Footscray and out on to the Western Hwy.

Turned off at Ballan and through Bunniyong to Sebastopol for morning tea, after which on to Ballarat, Carngham, Beaufort and finally to our destination the now famous steam rally.

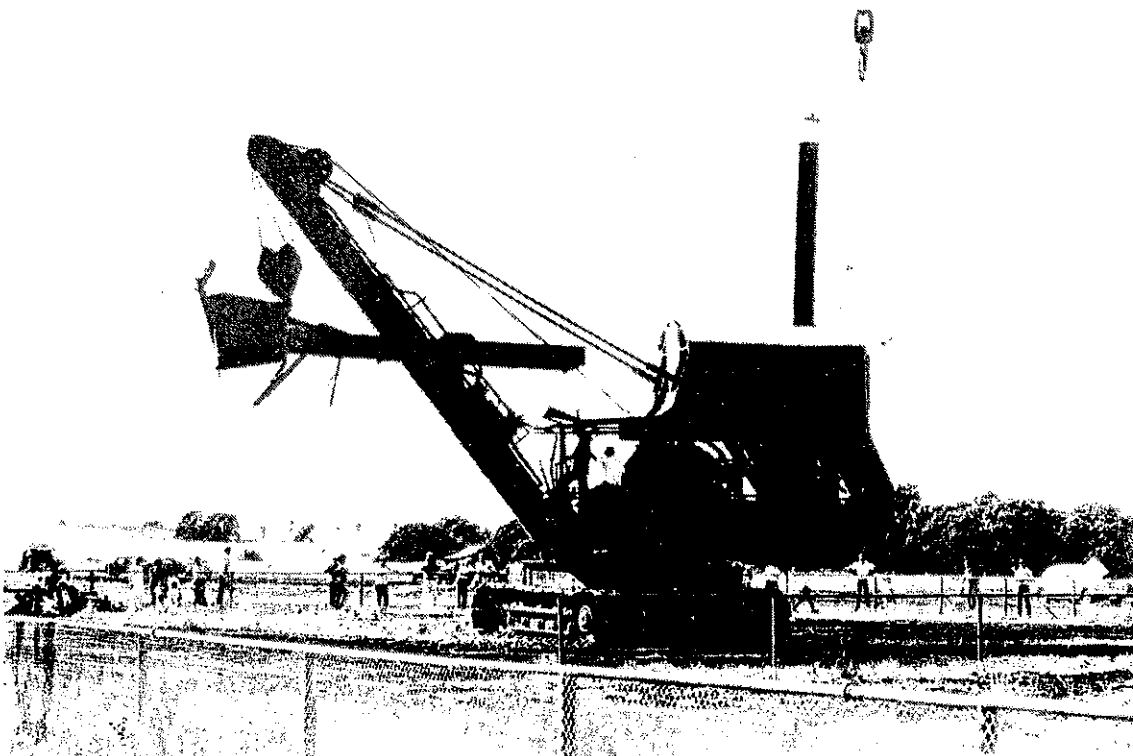
Plenty of steam engines and all sorts of machinery to see, it was very hot wandering around in the sunshine. Regrouped undercover in the food hall and enjoyed the odd "Steamburger" while listening to the local brass band.

After the Grand Parade, which included, some very interesting old bikes, we all met back at the carpark and headed off. With Tony leading some very good and fast roads were encountered through Snake Valley and Smythesdale. We then headed south at a good fast pace to Meridith, Anekie and finally to Baccus Marsh for dispersal,

All in all a very good day with no incidents, although Hans moaned about the steam rally entrance fee (\$4).

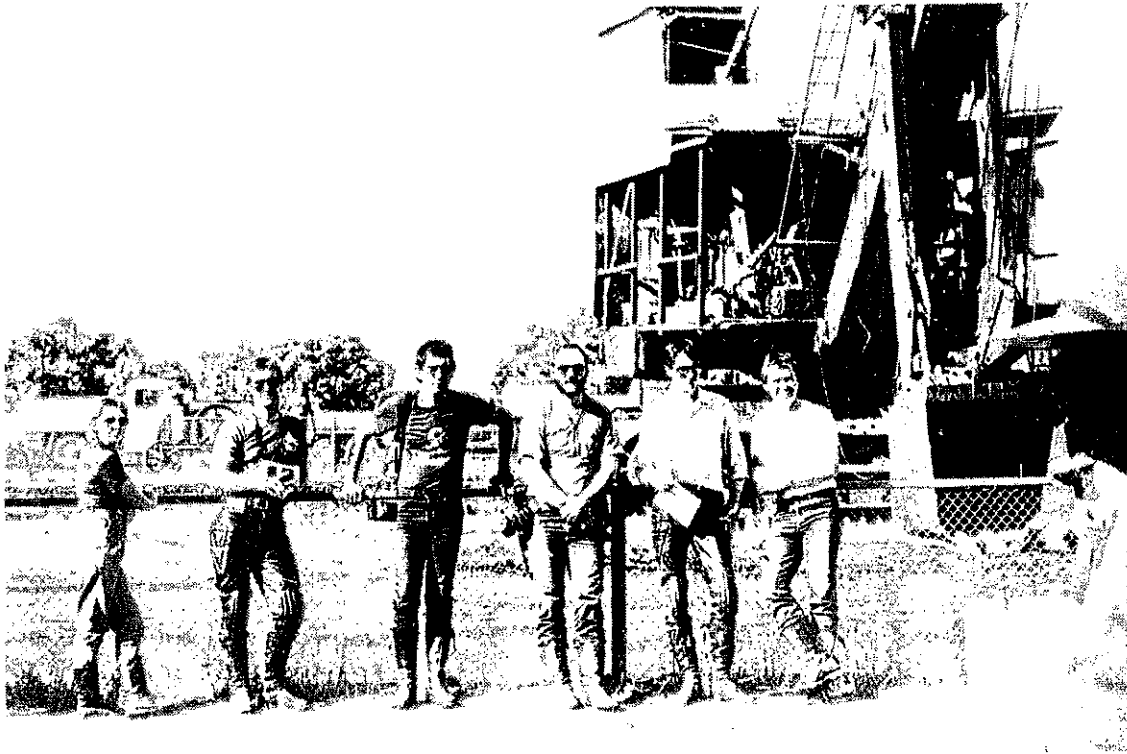
Approx 400km were recorded on the odometer, thanks Tony for a great ride.

Bob XJ900.



1923 RUSTON & HORNSBY 90 TON STEAM SHOVEL.

Steam Rally



* * * * *

HANGING ROCK 8-5-88

A small group led by Ray, left the car park and crossed the West Gate Bridge heading to our second pick up Laverton where we were joined by 3 more bikes. After about 15 mins our leader took us down to Werribee, the sky was quite gloomy but not raining yet. Taking the back roads which became quite narrow I could see the familar sight ahead, the DIRT road and the steep climb to the top. With a light drizzle it was quite fun as the surface had been cut up a bit by previous rain. Eventually I made it up and on the bituem and could see the headlight of a bike coming towards me in the distace, we quickly turned back and it wasn't long before we arrived in Ballan for morning tea.

After the "Please explain," (they thought I had fallen off) and a 20 min break we were on our way again through Wombat State Forest. The road was wet and steep at Blackwood, out to Trentham and Woodend where we stopped for lunch. Heading out to the Rock, some of the bikes went past a pony which became frightened and threw the girl rider off and started bolting down the road. Ross and Steve waited a good 5 mins before it was clear to go on. Payed the \$1 admission and then all went for "THAT" walk. Vicki and I stayed and looked after the bikes.

Left and went to Mt Macedon and Gisborne where it was decided to break up, thanks Ray.

Present; Ray Thomas XJ900,	Ben + Vicki GPz900,
Ross Gabriel GSX1100,	Hans Wurster K100RS,
Martin ? FJ1100,	Steve Leyland VF750,
Peter P GT750.	

Peter p. GT

STARTERS: - Martin FJ 1100; John W. BMW 650; Bob W. BMW R65;
Justin (new Rider) XJ 900; with Andrew (Pillion)
and Hans K 100 RS.

Received a phone call on SAT. evening to the effect that due to other commitments, a number of committee and other members could not make it to the ride, and if I could lead. I also had something else planned but what the hell -

Left home for the KBCP in light drizzle. The weather very over-cast and further rain was a certainty. Found the above riders and machines at the car park just prior to 9.30 am. Explained our corner marking system to Justin and Andrew and informed them all of the proposed route I would be taking.

With me leading and Bob as rear rider we left for the Kew Boulevard, then out to Warrandyte, Ringwood, Croydon where we picked up the Mt. Dandenong Tourist Road. All the roads being very wet and the continuous light drizzle, made for careful riding in very slippery conditions. Stopped for a smoko at the Mt. Dandenong lookout but the view, due to the low cloud and continuous drizzle, was very much short of spectacular.

Shortly after left and headed down Ridge Road to Olinda then down the Tourist Road via Sassafras to Upper Ferntree Gully for morning tea at 11.30 am. In fact this became our lunch stop. What Picnic? We ate our lunch on the footpath outside a Fish shop taking cover from the drizzle under the shop verandah.

From here we could see the effects of the water on the road. Cars were skidding as they approached then stopped at traffic lights even at quite low speeds. Others were spinning their wheels when taking off or turning. I recall coming down through Sassafras earlier following a Council truck. The driver applied his brakes a little carelessly in front of me and ended up doing just short of a 360° anticlockwise spin. It just missed a large tree as it slid off the road. We saw about a half dozen cars which had skidded off the roads at various places and crashed, and others that had crashed into each other due to the slippery conditions and no doubt, carelessness. John and Bob decided it was too dangerous to continue and called it a day there.

We left there after a lengthy break and rode up to Belgrave, then Emerald, Cockatoo to Gembrook where I turned off for Launching Place. Who said there was going to be no dirt? I wasn't supposed to be the leader either, remember? Anyway, there wasn't much greasy clay and gravel between Gembrook and Hoddles Creek etc. Only about 15 km. All nicely watered by the rain. Needless to say when we emerged at Launching Place the bikes were definitely in need of a good wash.

We then headed across to Healesville then via Yarra Glen and the Christmas Hills back to Warrandyte where Justin and Andrew left us. I have a feeling they enjoyed the ride and will be back for more. Martin left me at Lower Templestowe at about 1.30 pm.

I took my usual route home and after getting caught in another down-pour arrived there just before 2 pm after travelling 258 km from door to door.

Due to the continuous light rain and slippery conditions it actually started out as a 'Leisurly Ride' but progressively increased in pace. I was leader and corner marker most times as the others were usually together or within sight of each other.

Taking into account the awful weather which called for more than the usual amount of concentration, it was good to see that no one came to grief.

Hans, K100RS, (Pres.)

TATONG via WHITFIELD.

SUNDAY 22nd JUNE.

With Ross leading, Gary + Velga, Steve, Ben, Hans, Ian and Justin (New riders), Harry, Nick, Jack, Ian + Kerrie at the rear (on the new XJ900) left Yarra Glen to Yea and eats. Here Ross decided, due to the lateness of the ride, Whitfield would be bypassed and lunch would be at Benalla.

At Yea Ben spoke to several motorcyclists about the MTCV and handed out itineraries, prospective members? At a sedate pace we headed straight up the Maroondah/Midland highways to Benalla for a leisurely lunch. Surprisingly the weather was quite cool. After much discussion on the return route, Ross chose the Midland/Maroondah Hwys, Ben left the ride to do his own thing.

Down to Alexandra for a 'noon smoko and an indication of things to come as Ross push started the big Suzuki. We continued on until Buxton when Ross's battery called it QUITs.

After much pushing and finally a TOW from Hans on the K100RS we were on our way again. The black spur proved interesting with Ross having to keep the engine revs up to power the ignition system and stay of the brake light, No easy task while in thick traffic.

We made Coldstream before the battery well and truly died, there was now only five bikes, the others turning off for Yarra Glen. Gary O. to the rescue, two 9v dolphin torch batteries wired into the system proved enough to get the bike going minus lights.

As it was now quite dark the group of four bikes chaperoned Ross through the traffic and side streets to Gary's home in Blackburn without too much drama, I'm sure the car occupants wondered what was going on with this close formation riding motorcyclists followed by a hazard light flashing K100RS, (Jack U.)

Ian Payne XJ900.

* * * * *

EXPO TRIP.

Hi guys, well I made it. Left home about 10am Friday the 13th and headed north, it was a beautiful day for riding, cool but sunny and I felt good. Headed out the Maroondah Hwy and up to Benalla then followed the Hume to Yass and Canberra, where I stayed the night at my sister's place. No drama's YET. Left Canberra at 9am, I was up and ready to go at 7am but decided to wait until the fog had cleared and the temperature climbed a bit. MINUS 1° is too cold for me, but alas the fog doesn't lift until midday sometimes so it looks like I'll have to brave it mate!

Anyway about 20 miles out of Canberra, just when I thought my arms and legs had deserted me, I rode out of the fog into blue sky's and warmth beautiful warmth. Sydney approached quickly and I managed to battle through the Sat. lunch time traffic.

cont.

THE RELATIVITY OF SPEED.

(Or how to go slow fast)

As bikes get more sophisticated in areas of power, fairings, suspension and handling, they are easier to ride faster but still feel " slow" even on not-so-perfect road surfaces.

Easier that is until you reach a bend where you suddenly wish you were going 20k's slower.

A pretty common situation.eh?.....and surely the major reason for press reports which say " a motorcyclist lost control of his (her?) machine and failed to take a bend".

Lost, but not all, in the Club have such sophisticated (that word again) bikes and this goes a long way to explain why riders at the rear of runs have to try hard to get near the front, if they want to, of course.

That is, -the front runners are travelling faster easier but feeling slower..... huh? read it again!
WE now have THE FIX for this syndrome.

It's simple.... just reject the easy-to-go-fast bikes in favour of the following specifications.

- : Low power, like in a single or twin that vibrates well at highest RPM.
- : No fairing, not even a deflector, get the wind pressure full on.
- : Lousy suspension to feel every bump, hole and ripple at the seat.
- : Uncertain handling, makes you over cautious.

This bike may have other drawbacks but what it will do is make you feel like your'e flying at 100 KPH.

That's right, travel slow, feel fast and keep out of trouble.

Jack Youdan.
Enfield 350.

PS. This article tells us that Harley riders were right all along!



MOTORCYCLE TOURING CLUB OF VICTORIA, Inc.

P.O. Box 453, Richmond 3121, Victoria

FOR SALE

Windcheaters

Black	Size 16 (95 cm)	12.00
Blue	Youth Small (75 cm)	8.00
	Youth Medium (80 cm)	8.00

T-Shirts

Yellow	X-Large (105 cm)	7.00
	Large (100 cm)	7.00
	Medium (95 cm)	7.00
	Youth Large (85 cm)	4.00
Navy	Medium (95 cm)	7.00
Black	Youth Medium (80 cm)	4.00
	Youth Large (85 cm)	4.00

Badges

Metal	5.00
Brown/Gold adhesive	0.50
Gold/Black cloth	3.00
Black/Gold cloth	3.00

All of the above are available from the Treasurer (Vicki Piller) at the monthly meetings, or telephone 344 7887 during office hours, 489 8578 after hours.



MOTORCYCLE TOURING CLUB OF VICTORIA, Inc.

P.O. Box 453, Richmond 3121, Victoria

20th May, 1988.

MEMBERSHIP RENEWALS 1988/89

Well readers it is time to boost the coffers of the MTCV with your annual membership fee. This fee enables the club to keep producing your itineraries, your monthly magazine, the postage of same, etc. The MTCV is not a profit making organisation and your fees cover the necessary running costs only.

For the modest sum of \$20 you have the opportunity to meet people with a common interest, to ride on nearly every weekend of the year and to participate in all the fun-filled, action-packed social outings.

Please let us have your renewal in the near future, by post if you wish, or at the forthcoming July meeting. Membership will expire on the 30th June each year.

We will be publishing a revised membership list soon, so if you have changed any of the details shown on the enclosed list, please let us know with your renewal. The list is only for distribution to members, but if for some reason you do not want details published, then please indicate on the form below.

NAME

Change of Address

.....Postcode

Change of Telephone Number (Home/Work)

Change of Motorcycle Make Model

Membership Renewal for 1988/89

I enclose cash / cheque for \$20.00 representing the cost of my membership of MTCV for 1988/89.

Please do not publish the following details in the membership list:

.....
Please return this form to the address shown above or to me at the next meeting. Thank you.


Vicki Piller,
Treasurer.

BEAUTIFUL BEECHWORTH'S
PRIVATE GUEST HOUSE



The Old Priory



MOTORCYCLE
TOURING CLUB
OF VICTORIA, INC.

BEECHWORTH WEEKEND JUNE 11, 12 & 13.

The Date Queens Birthday Weekend; Saturday 11th, Sunday 12th and Monday 13th June 1988.

The Place Historic old Convent situated in centre of town (Loch st). Offering single, twin share or double room accommodation plus Games and T.V. rooms. Also all meals can be fully catered.

Bookings A tentative booking has been made for 12 people and must be confirmed by FRIDAY 20th of MAY. Therefore don't delay return your booking to gether with a DEPOSIT of \$20 per person to secure your place.

To; Ian Payne, 2/3 LEROUX St. OAKLEIGH, 3166. Ph. 563 2410 (H).

BEECHWORTH WEEKEND.

NAME.....

ADDRESS.....P/Code.....

PHONE.....Home/Work.

Please book the following for me;

.....Single/Twin/Double room plus breakfast @ \$15 per person. Saturday night \$.....

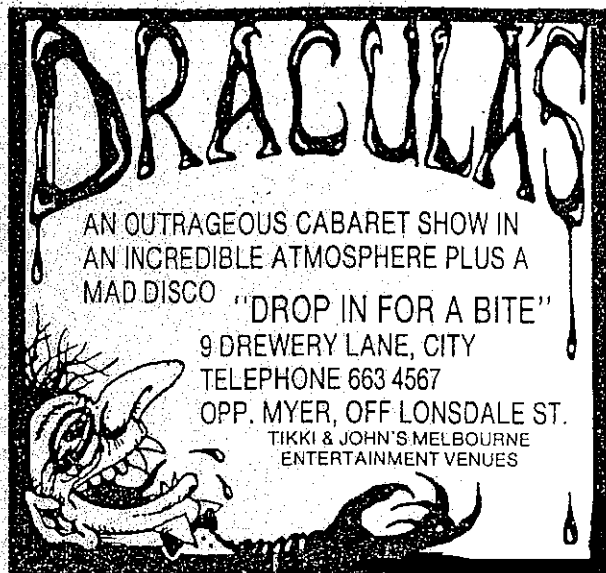
.....Single/Twin/Double room plus breakfast @ \$15 per person. Sunday night. \$.....

.....Place(s) Four course Saturday evening meal + wine tasting @ \$17.50 each \$.....

.....Place(s) Three course Sunday evening meal.....@ \$15.00 each \$.....

Total \$.....

or, I enclose a deposit of \$20 per person,.....\$20 x..... \$.....



MOTORCYCLE
TOURING CLUB
OF VICTORIA, INC.

FRIDAY 17th JUNE

7.00-7.15pm

DRACULA'S is a Theatre Restaurant featuring a cabaret live on stage accompanied by a FOUR course meal (choice of 5 main courses). It is fully licensed with dancing after the show.

Bookings for this Social Night close on 15th of May and must include a deposit of \$15 per person.

ETTAMOGAH PUB

JULY 23rd & 24th

Originally scheduled as a day run, we plan to extend this to a weekend event. Overnight accommodation will be at the LAKE HUME RESORT, (15km east of Albury & only 10mins from Ettamogah) which offers:-

Motel rooms....Single \$39, Double \$54.

* Cabins.....\$58. (approx \$10 per person)

*Cabins are self contained units and sleep up to six people in a two twin and one double configuration. Note; Bedding is not supplied.

LAKE HUME RESORT offers: _ Swimming, Hire boats, tennis, BBQ's, Restaurant and Pokies.



Bookings to; Ms.K.Gooding, 2/3 Leroux St. Oakleigh. 3166. Ph.563-2410 (H)

DRACULA'S.

NAME.....

ADDRESS.....P/code.....

PHONE.....Work/Home.

.....Person(s) at \$33 per head.....\$33 x \$.....

Deposit of....\$15 per head.....\$15 x..... \$.....

Balance payable on night \$.....

P.T.O.

MOTORCYCLE TOURING CLUB OF VICTORIA
P.O. Box 453, Richmond 3121, Victoria



Ettamogah Pub.

YES / NO. I will be attending this event and would require Saturday night accommodation, being;

Motel.....Single room.

"Double room

Cabin.....Single bed.

"Double bed.

Whalley, Bruce

